

# Multiple representations for the straight line.

This resource was written by Derek Smith with the support of CASIO New Zealand. It may be freely distributed but remains the intellectual property of the author and CASIO.

Select one of the three icons shown GRAPH or TABLE mode from the main menu by using the arrow keys to highlight the icon required.

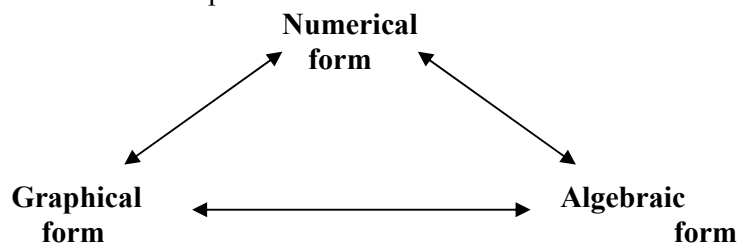


Icon # 5



Icon # 7 for quick entry.

This worksheet is to help show the links between the three forms of mathematics.



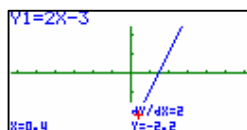
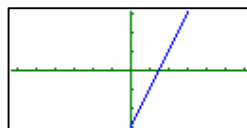
- Do it numerically, view it graphically,
- Do it numerically, view it algebraically,
- Do it graphically, view it algebraically,
- Do it algebraically, view it graphically,
- Do it algebraically, view it numerically.

**Example:** Plot the line  $y = 2x - 3$

**Answer:** Select the icon you want to work in.

### Graph

Type in the equation, **F6** then **SHIFT F1**



### Table

Type in the equation, **F5** for the RANGE setup, then **F6**



X	Y1	Y2
0	-3	2
1	-1	2
2	1	2
3	3	2

Trace and plot the co-ordinate points shown on the screen (x , y).