

Piecewise Functions

This resource was written by Derek Smith with the support of CASIO New Zealand. It may be freely distributed but remains the intellectual property of the author and CASIO.

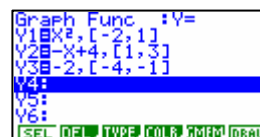
Select GRAPH mode from the main menu by using the arrow keys to highlight the GRAPH icon or pressing 5.



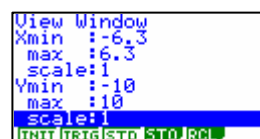
Note: Piece wise functions are little pieces of different functions, restricted in the domain (x values) for which they are to be drawn on a set of axes.

Example: Draw the graphs of: $y = x^2, -2 \leq x \leq 1$
 $y = -x + 4, 1 \leq x \leq 3$
 $y = -2, -4 \leq x \leq -2$

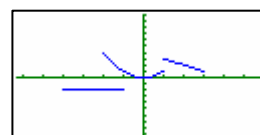
Answer: Enter the functions in the Y1, Y2 and Y3 spaces. To restrict the domain values [] are used



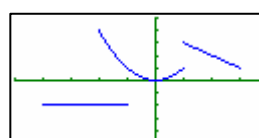
Next, set up the **View-Window** by pressing **shift F3**



Press EXIT the F6 to draw the graphs.



If you want to, change the **View-Window** to 'zoom' in on the graphs, to get a better picture (view).



You can '**trace**' over the graphs by pressing **shift F1** the use the left, right, up or down arrows to scroll each of the graphs on the screen.